

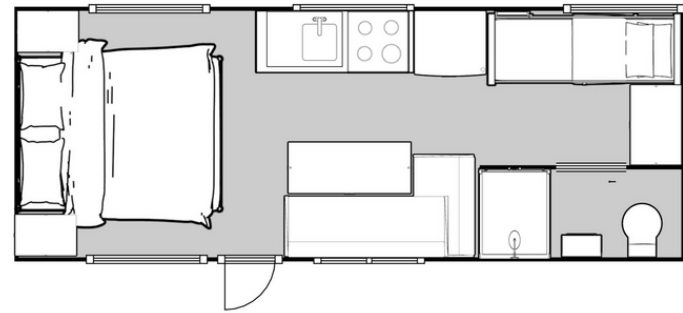
## FAMILY BUNK LAYOUTS

### KAI IWI 640B

21', 4/5/6 berth, rear bunks

**TARE:** 2500kg (approx)

**ATM:** 3200kg

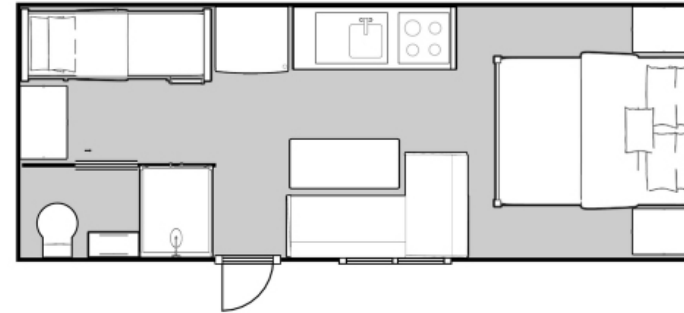


### KARAPIRO 670FB

22', 4/5/6 berth, front bunks

**TARE:** 2600kg (approx)

**ATM:** 3500kg

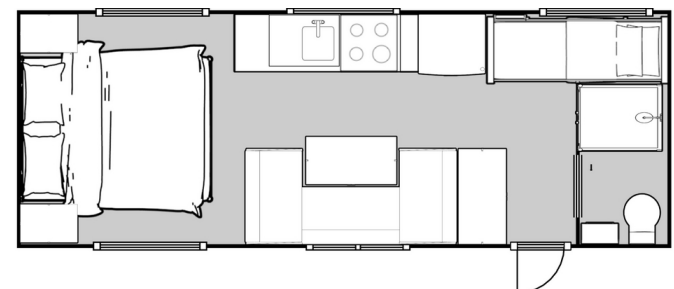


### KĀPITI 670B

22', 4/5/6 berth, rear door

**TARE:** 2600kg (approx)

**ATM:** 3500kg

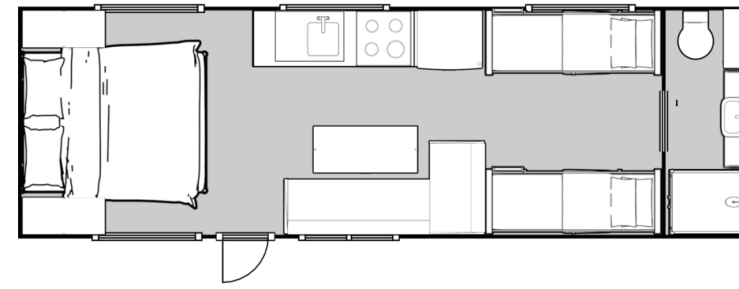


### KARIOITAHĪ 730QB

24', 6/7 berth, quad bunk

**TARE:** 2800kg (approx)

**ATM:** 3500kg



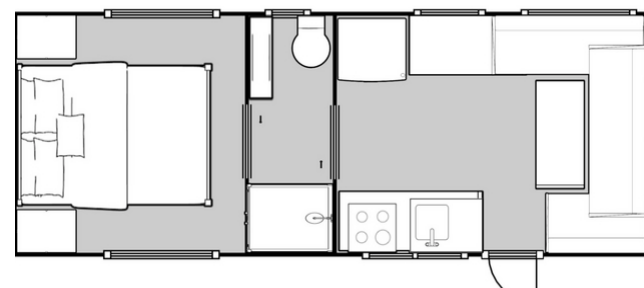
## CLUB LOUNGE LAYOUTS

### TEKAPO 700RC

23', 2+ berth, rear club

**TARE:** 2750kg (approx)

**ATM:** 3500kg

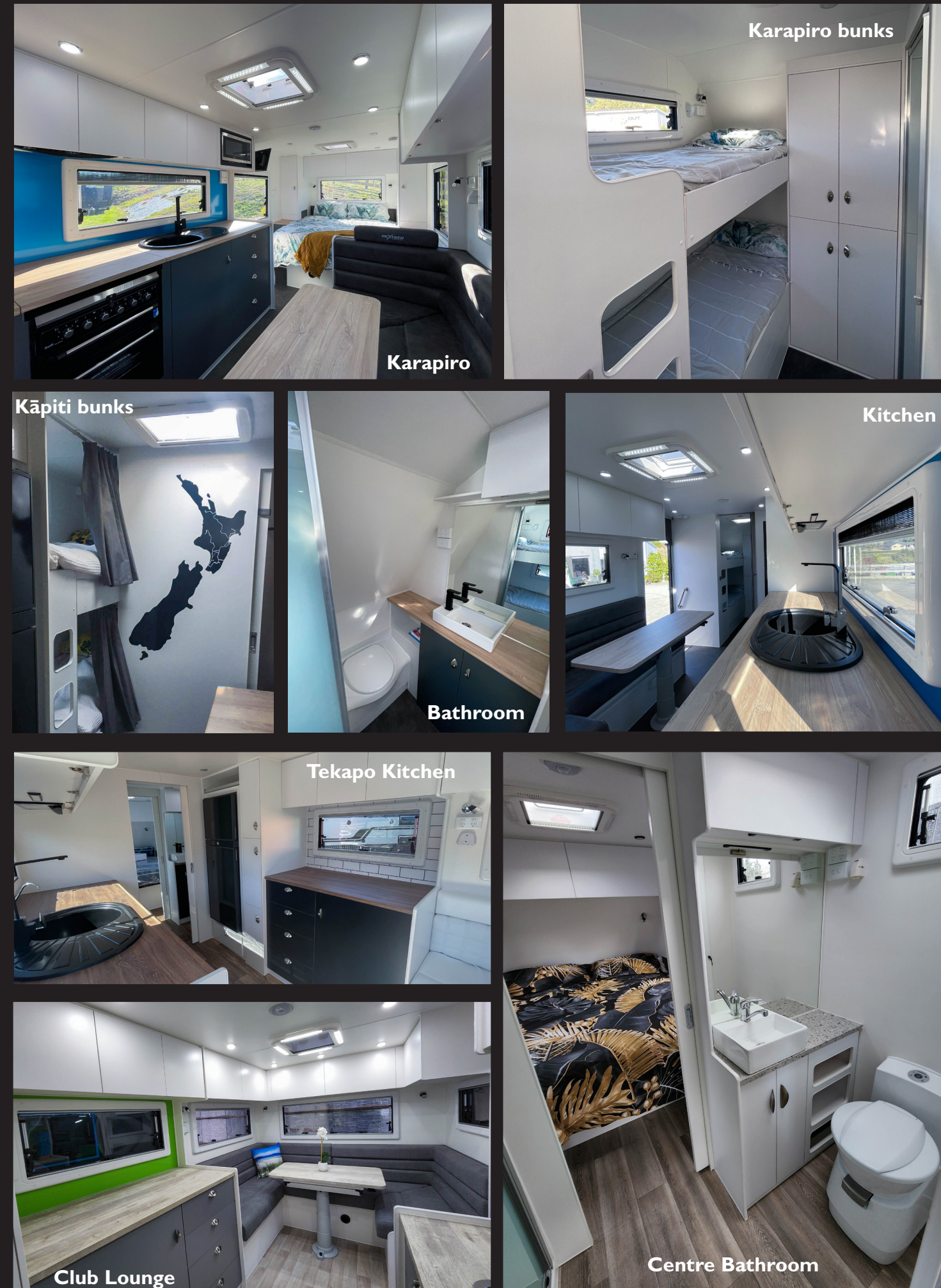
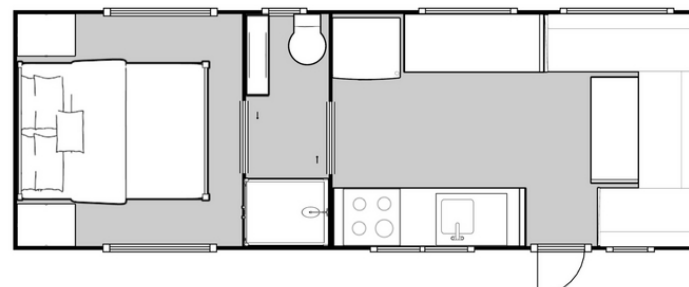


### TUTUKAKA 655RC

21'6", 2+ berth, rear club, high floor

**TARE:** 2800kg (approx)

**ATM:** 3500kg



# INSIDEOUT RV

## NEXTGEN CARAVANS



## UPGRADE YOUR ADVENTURE

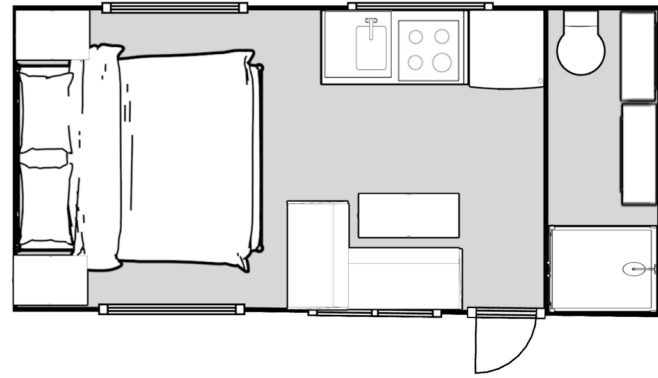
UPGRADE YOUR ADVENTURE

@INSIDEOUT.RV | 08002INSIDE | SALES@INSIDEOUTRV.CO.NZ

@INSIDEOUT.RV | 08002INSIDE | SALES@INSIDEOUTRV.CO.NZ



## SINGLE AXLE LAYOUTS



### PATEA 530L

17'6, 2 berth, full bathroom

**TARE:** 2000kg (approx)

**ATM:** 2800kg

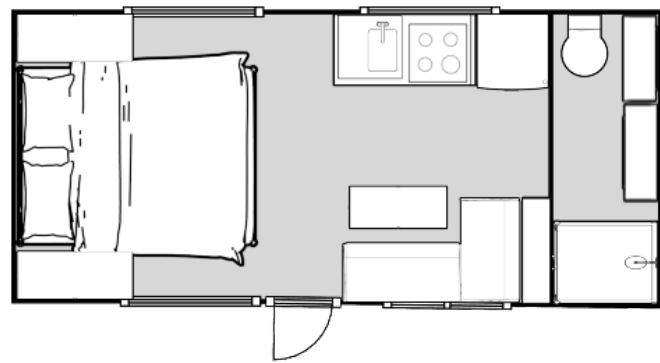
## MID SIZE LAYOUTS

### OPITO 570L

18'6, 2 berth, full bathroom

**TARE:** 2200kg (approx)

**ATM:** 3200kg

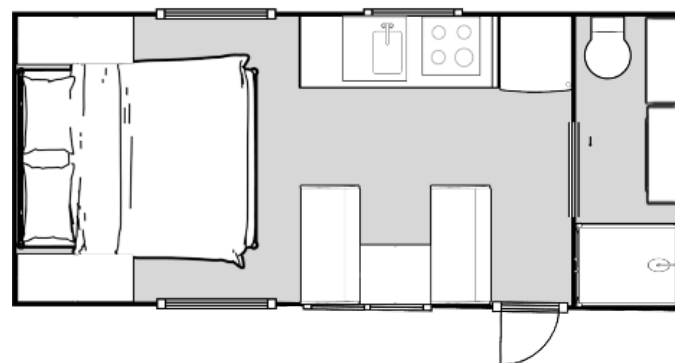


### OHAU 570D

18'6, 2 berth, full bathroom

**TARE:** 2200kg (approx)

**ATM:** 3200kg

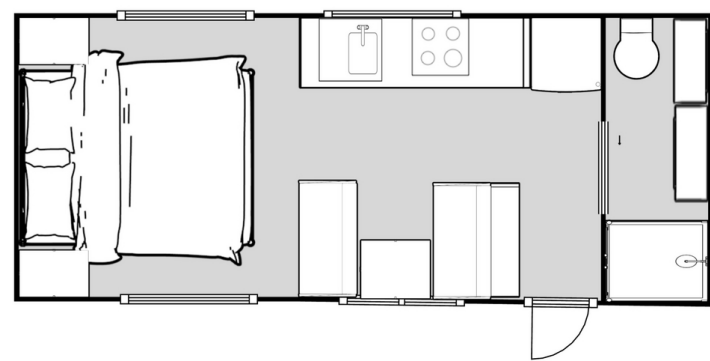


### MATAI 595P

19'6, 2 berth, full height pantry

**TARE:** 2350kg (approx)

**ATM:** 3200kg

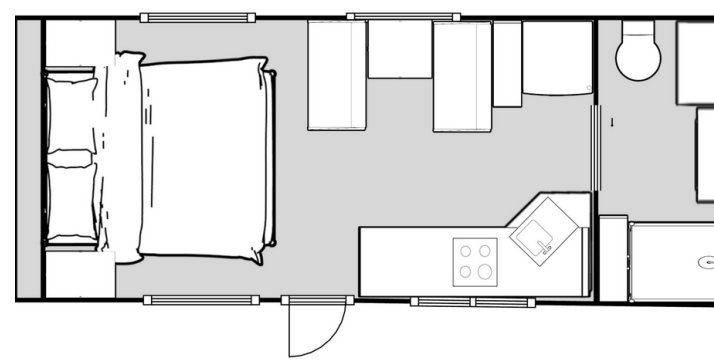


### MOTUEKA 620AK

20'6, 2 berth, angled kitchen

**TARE:** 2400kg (approx)

**ATM:** 3200kg



Queen Bed



L-Shaped Lounge



Dinette Lounge



Matai



Kitchen



Bathroom



Motueka

Some layouts may differ and subject to availability.



## SPECIFICATIONS

InsideOut RV standard

Different options available. Discuss with one of our sales team...

### EXTERIOR

- Hot dip galvanised chassis
- Alloy Wheels
- Rear Bumper & Spare wheel
- 2 x Gas Bottle Cradles
- Std Battery Management System
- Black Checkerplate Stone Guard
- 3 x Roof Hatches
- Exterior Picnic Table
- 4 x Exterior LED Lights
- Wired Reversing Camera
- Bayonet BBQ Gaspoint
- All Terrain Roller Rocker Suspension with shockers
- 2 x 95L Water Tanks
- Aluminium Step
- Aluminium Composite Panelling
- Ranger Windows
- Power Fan Hatch
- Dometic Awning
- 12 Pin Car Plug & Anderson Plug
- Standard Electric Breakaway System
- 1 x USB Point
- Electric Drum Brakes
- Standard 50mm Coupling
- 1 x 95L Grey Water Tanks
- 2 x Batteries 100Ahr (in metalbox)
- Choice of Colours
- Dometic Entry Door
- Full Insulation (excl floor)
- 1 x Tunnel Boot
- 2 x Solar Panels 170W
- External Shower
- 16L Waste Cassette

### INTERIOR

- 4 x Gas Stove, Grill & Oven
- Bluetooth Radio, 4 x Speakers
- Gas & Electric Hot Water
- Chrome Tapware
- Your Choice BenchTop Laminate
- Standard Cupboard Hinges
- Your Choice Cupboard Handles
- Shelves or Hanging Robes
- 12V Rangehood
- Diesel Heater
- Large 750 x 900 Shower
- White Countertop Square Sink
- Your Choice Floor Vinyl
- Overhead Cupboard latches
- Queen Size Pillow Top Mattress
- Dometic 3 Way Fridge 188L
- 12V Water Pump
- Dometic Swivel Toilet
- Your Choice Cupboard Colours
- Your Choice Upholstery
- Overhead Cupboard Gas Struts
- Cubbyholes with 12V Power Points

### WARRANTY

Structural chassis: 5 years | Body / build: 3 years | Appliances: Manufacture's Warranty  
Specifications correct at time of printing. Subject to change.



**UPGRADE YOUR ADVENTURE**

@INSIDEOUT.RV | 08002INSIDE | SALES@INSIDEOUTRV.CO.NZ

@INSIDEOUT.RV | 08002INSIDE | SALES@INSIDEOUTRV.CO.NZ